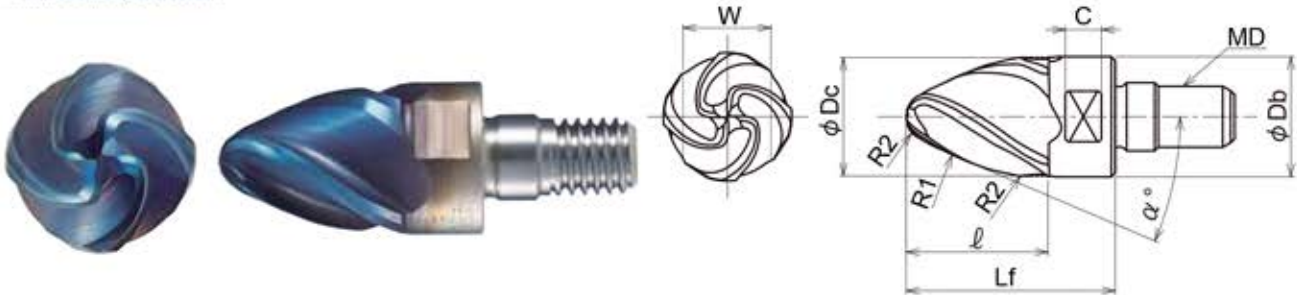


STLP
TYPE

Solid modular head STLP type

- 4 flutes / Helix angle 30°
- Form accuracy: 0.010mm



Cat. No.	Stock	Grade	No. of flutes	(mm) Dimensions									
				φDc	l	Lf	R1	R2	α°	φDb	MD	C	W
STLP4160T20R4-M8	◎	DH115	4	16	14.3	26	1500	4	20°	15	M8	5.5	14
STLP4200T20R5-M10	◎			20	17.9	30	1500	5	20°	19	M10	5.5	17

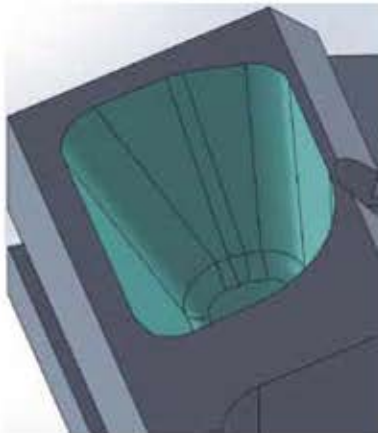
Note) Be sure to use DIJET DS type spanner wrench to prevent over-tightening.

◆ Tightening Torque for head

Thread	Tightening torque	Spanner size of S-Head	Cat No. of spanner wrench DS type
M8	10~11N·m	14	DS-14
M10	10~16N·m	17	DS-17

STLP
TYPE

Cutting data



Overhung length: 106mm

Work	Part name	Test piece
	Material	S50C C50
	Hardness	—
Tool	Tool No.	STLP4160T20R4-M8
	Grade	DH115
Cutting conditions	n	n=10,000min ⁻¹
	Vf	Vf=1,200mm/min
	ap (mm)	2mm
	ae (mm)	0.15mm
	Coolant	Dry
	Machine	5-axis MC
Result	STLP achieved high efficient & precision machining, compared with ball nose end mill.	

Movie

