

Referans Nr.	D	H	H1	M	Kaldırma Kuvveti Lifting Force (N)	(g)
1489-20045A	25 <sup>+0.028</sup> <sub>+0.018</sub>	16	8	M8x1.25	540	46
1489-12025A	32 <sup>+0.031</sup> <sub>+0.021</sub>	20	9	M10x1.50	600	92
1489-15032A	45 <sup>+0.031</sup> <sub>+0.021</sub>	26	11	M14x1.50	780	230

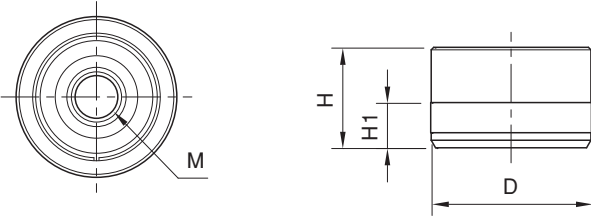


### Ürün Nr. 1489 Konumlama Burcu (Açık)

- Kaldırma kuvveti hareketli konik burcu yukarı itmek için yay kuvvetini kullanır.(N)
- Vidalar doğru sırayla sıkılmadığında tekrarlanabilirlik 0.01 aşabilir.
- Toplam yük, maksimum yük kapasitesini aşıyorsa, tekrarlanabilirlik 0.01 aşabilir.

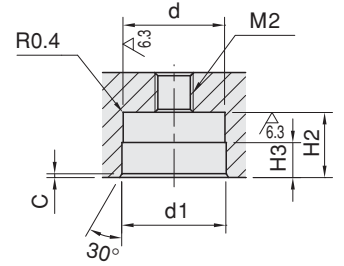
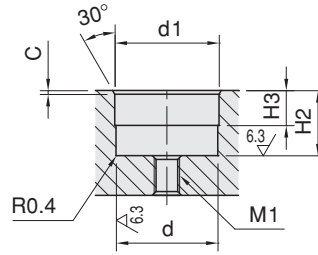
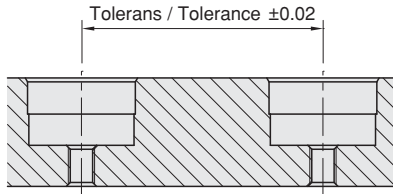
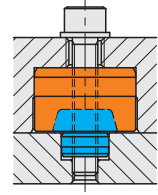
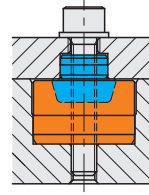
### Product Nr. 1489 Flex Locator Bushings (Through)

- The lifting force is the power of the inner spring of the body to push up the movable tapered bushing.(N)
- If the screws are not tightened in the correct order, the locating repeatability may exceed 0.01
- If the total load exceeds the maximum loading capacity, the locating repeatability may exceed 0.01



### Montaj Detayı / Mounting Details

Referans Nr.	d (H6)	H2 (±0.05)	d1	H3	M1	M2
1489-20045	25	16.5	25.2	8	M6x1.00	M10x1.50
1489-12025	32	20.5	32.2	11	M8x1.25	M12x1.75
1489-15032	45	26.5	45.2	15	M12x1.75	M16x2.00



### Uygulama Örneği / Application Example

