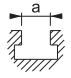

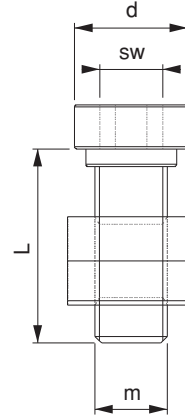


| Referans Nr. |  | m | L | d | sw |  |
|--------------|---|-----|----|------|----|---|
| 1120-512 | 12 | M10 | 29 | 16.5 | 8 | 48 |
| 1120-514* | 14 | M12 | 29 | 16.5 | 8 | 54 |
| 1130-614* | 14 | M12 | 30 | 20.5 | 10 | 80 |
| 1130-616 | 16 | M12 | 30 | 20.5 | 10 | 100 |
| 1130-618 | 18 | M12 | 30 | 20.5 | 10 | 130 |
| 1130-620 | 20 | M12 | 36 | 20.5 | 10 | 180 |
| 1130-622 | 22 | M12 | 36 | 20.5 | 10 | 220 |
| 1150-718* | 18 | M16 | 34 | 24.5 | 12 | 145 |
| 1150-720 | 20 | M16 | 34 | 24.5 | 12 | 190 |
| 1150-722 | 22 | M16 | 42 | 24.5 | 12 | 260 |
| 1150-724 | 24 | M16 | 42 | 24.5 | 12 | 350 |
| 1150-728 | 28 | M16 | 42 | 24.5 | 12 | 470 |
| 1160-822 | 22 | M20 | 45 | 34 | 12 | 320 |
| 1160-824 | 24 | M20 | 45 | 34 | 12 | 410 |
| 1160-826* | 28 | M24 | 45 | 34 | 12 | 550 |
| 1160-828 | 28 | M24 | 55 | 34 | 12 | 580 |
| 1160-832 | 32 | M24 | 61 | 34 | 12 | 603 |
| 1160-836 | 36 | M24 | 66 | 38.5 | 12 | 865 |



Ürün Nr. 1120-1130-1150-1160 Sabitleme İmbus Civata ve T-Pabuç

- (a) 14-28 T-Kanal sabitleme imbus civata ve T-Pabuç DIN 508
- Kalite 10.9
- Siyah Kaplama
- Yıldızlı olan kodlar alt destek civatalardır.

Prod. Nr. 1120-1130-1150-1160 Fixing Imbus Bolt and T-Nut

- (a) 14-28 T-Slot fixing imbus bolt and T-Nut DIN 508
- Quality 10.9
- Black Coating
- Star-marked codes are bottom support bolts.